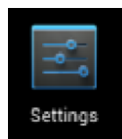


Setting up a Microsoft Exchange account on an Android phone or tablet

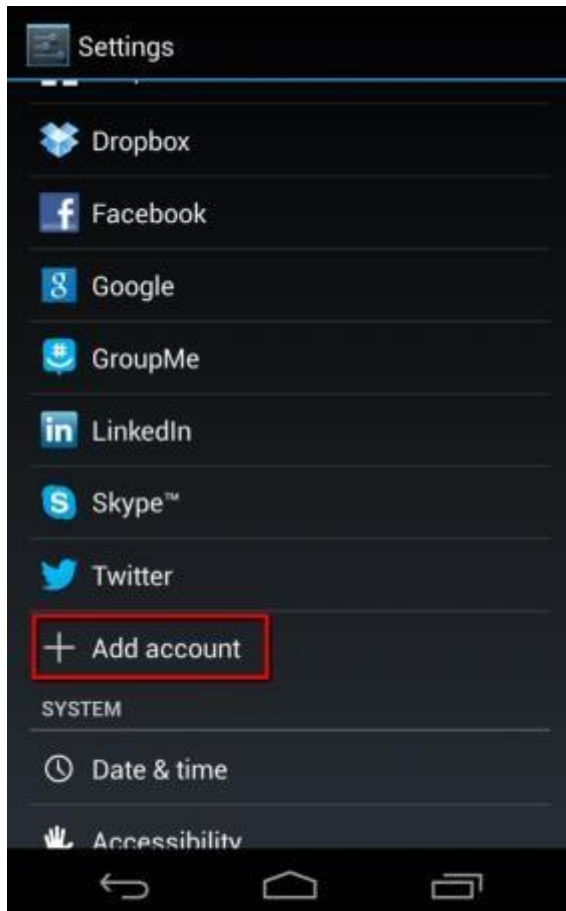
The following steps are required to configure Microsoft Exchange Activesync on most Google branded Android phones or tablets:

Note: Please verify with your company's IT or System Administrator that you've been configured with an ActiveSync license before continuing.

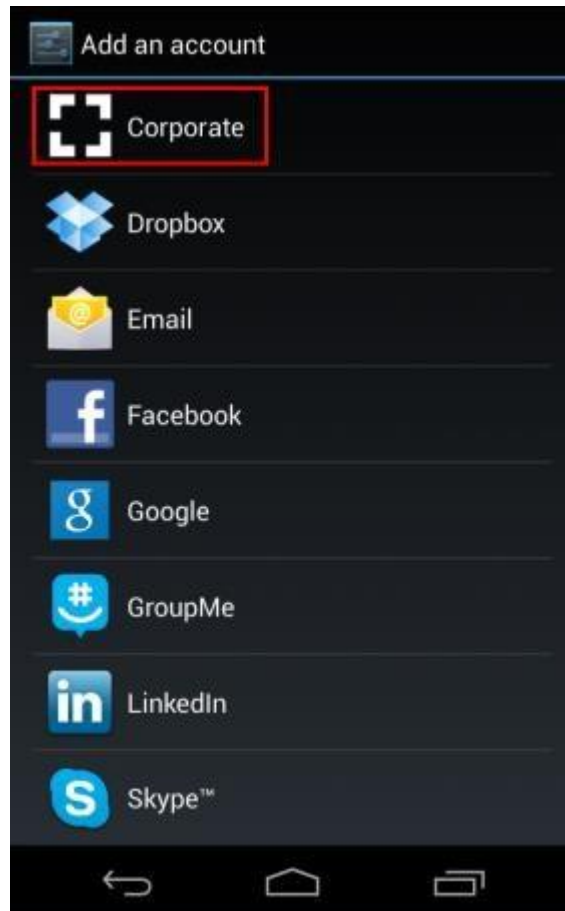
1. Locate your **Settings icon** within your App Drawer.



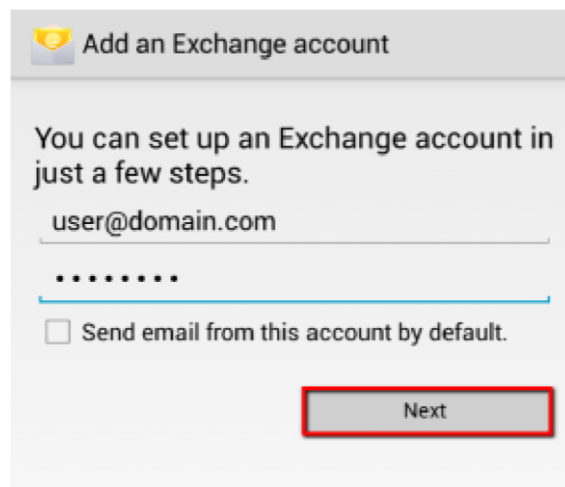
2. Within Settings, scroll down and select **Add Account**.



3. Select **Corporate** for your account type. (Or Exchange)



4. Enter your Email Address and Password, then select **Next**.



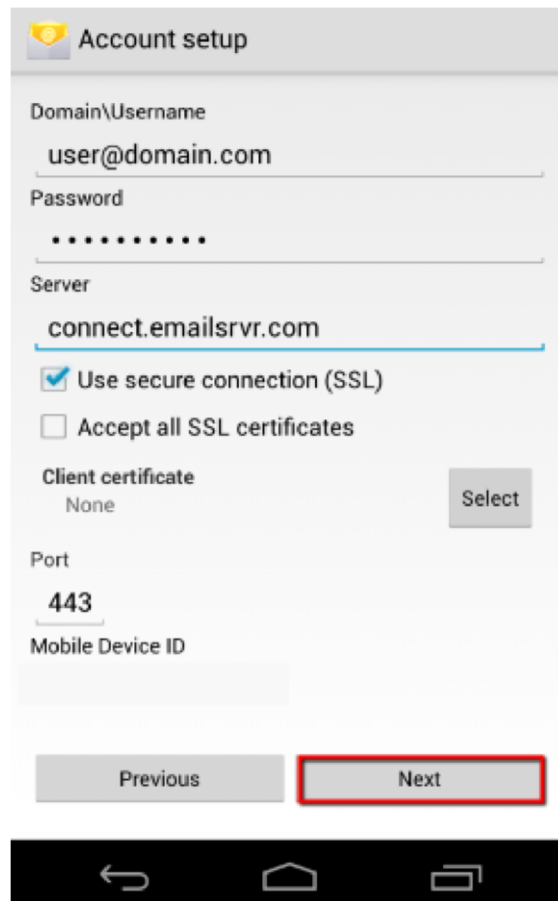
5. Enter only your email address in the Domain\Username section. Make sure your password is correct, then add the following:

1. **Domain\username: your email address**

2. Password: Your email password

3. Server: e1.cybersharks.com

4. Check Use secure connection (SSL) and Accept all SSL certificates Select the **Next** button.

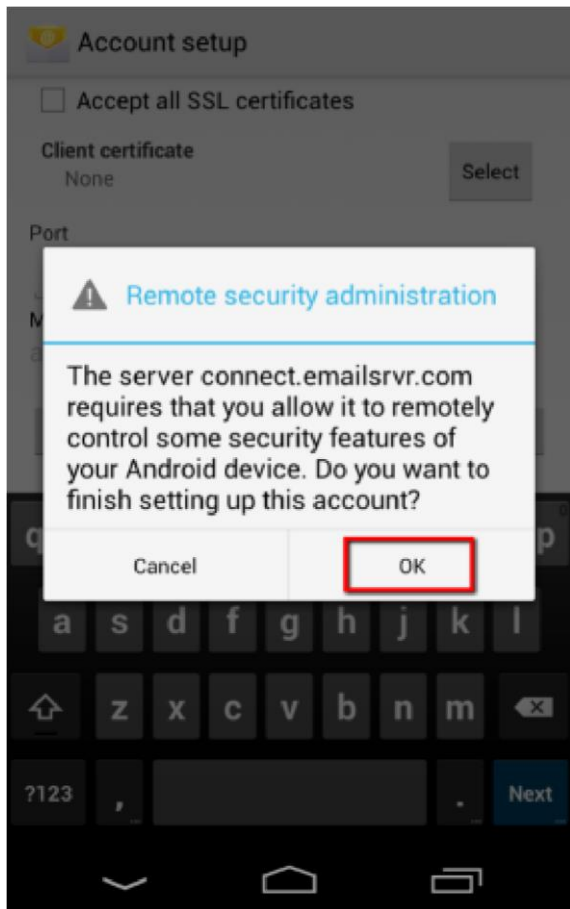


The screenshot shows an 'Account setup' screen with the following fields and options:

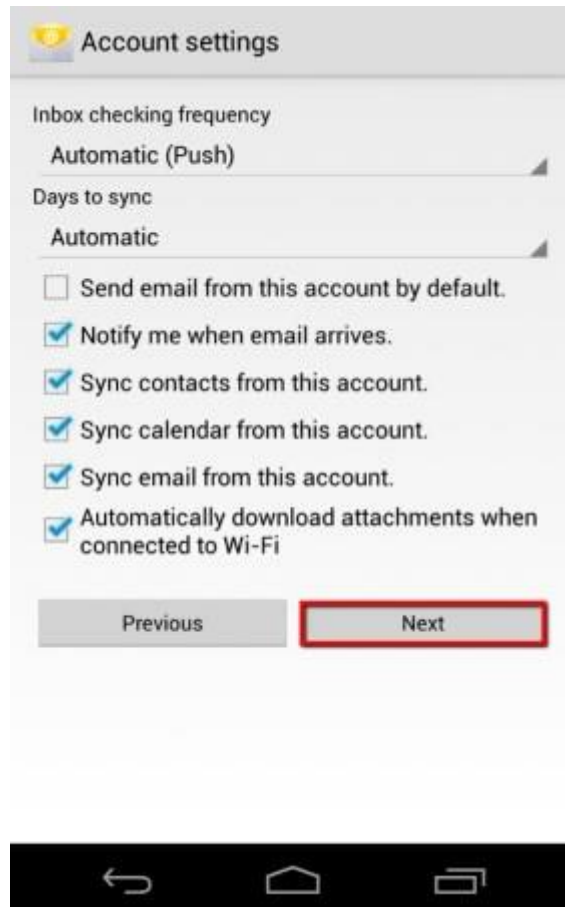
- Domain\Username:** user@domain.com
- Password:** masked with dots
- Server:** connect.emailsrvr.com
- Use secure connection (SSL)
- Accept all SSL certificates
- Client certificate:** None (with a 'Select' button)
- Port:** 443
- Mobile Device ID:** (empty field)

At the bottom, there are two buttons: 'Previous' and 'Next'. The 'Next' button is highlighted with a red border. Below the buttons is an Android navigation bar with back, home, and recent apps icons.

6. You will be presented with a Security Administration prompt. Select **OK**.



7. Click **Next** on this screen.



8. Feel free to name your account, then select **Next** and the setup will be complete.

 Account setup

Your account is set up, and email is on its way!

Give this account a name (optional)

User@domain.com

Next

